

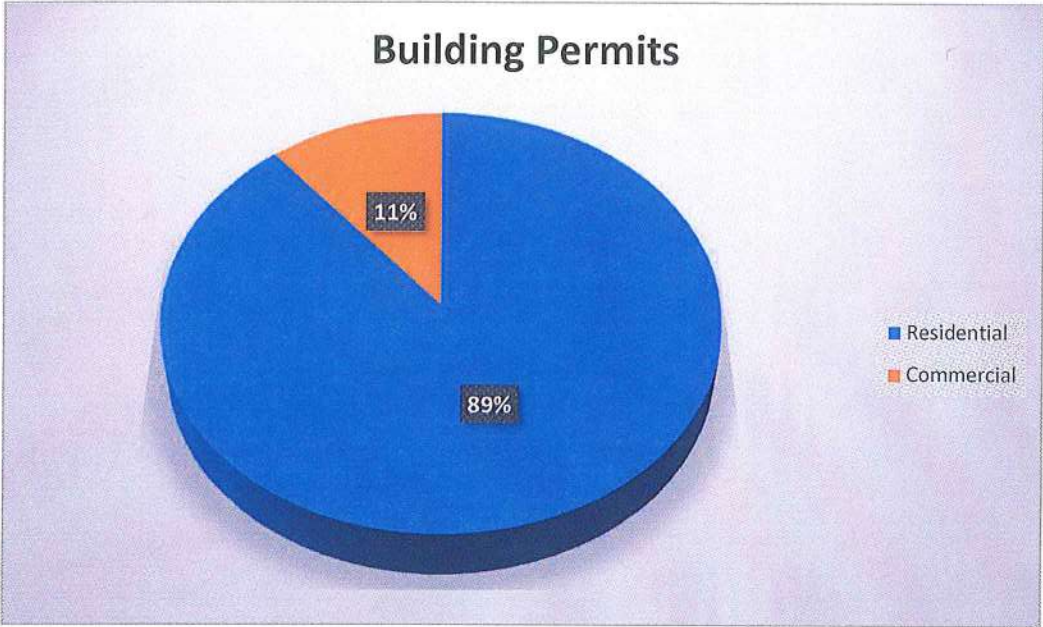


**KANAWHA COUNTY  
PLANNING & COMMUNITY DEVELOPMENT  
Monthly Activity Report**

**October  
2019**

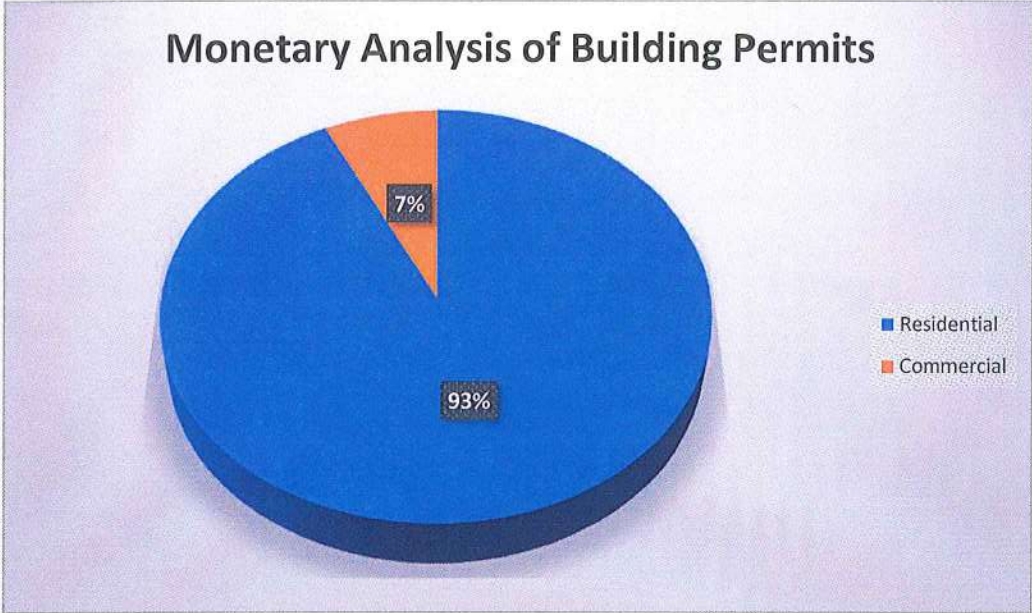
**October  
2019**

Permit Type	Permits Issued
Residential	24
Commercial	3
<b>Total Permits</b>	<b>27</b>



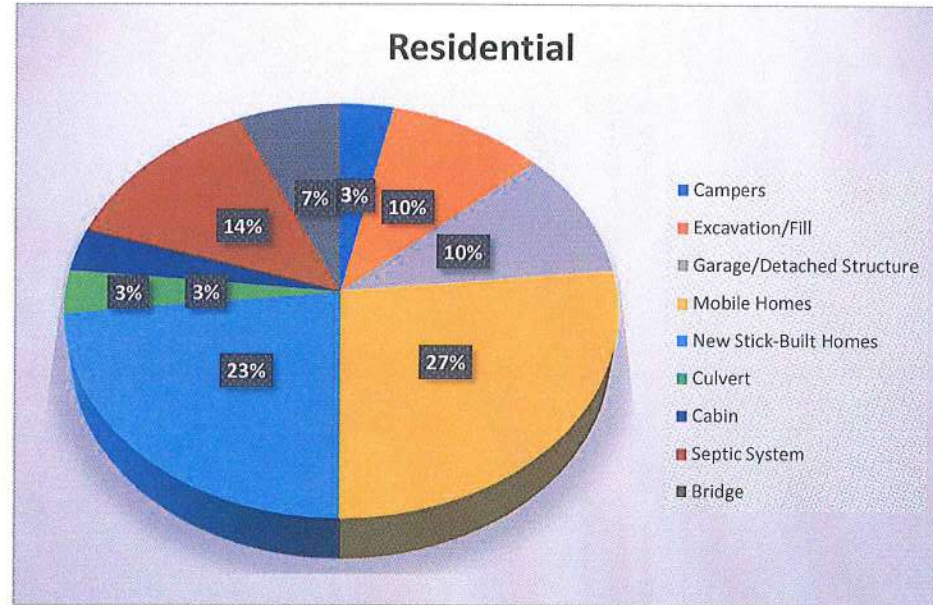
October  
2019

Permit Type	Approximated*
Residential	\$ 1,336,955.00
Commercial	\$ 105,860.00
<b>Total Permits</b>	<b>\$ 1,442,815</b>



## October 2019

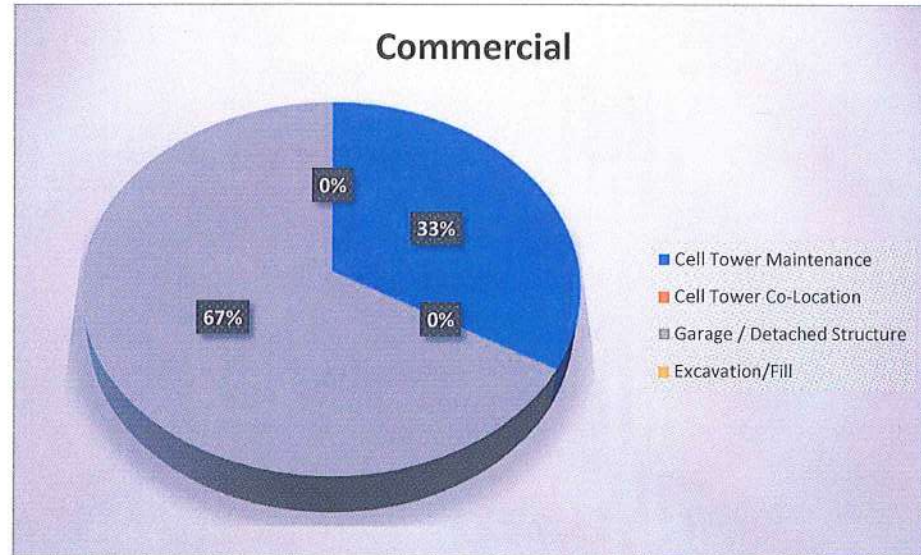
Permit Type	Number Issued
Campers	1
Excavation/Fill	3
Garage/Detached Structure	3
Mobile Homes	8
New Stick-Built Homes	7
Culvert	1
Cabin	1
Septic System	4
Bridge	2





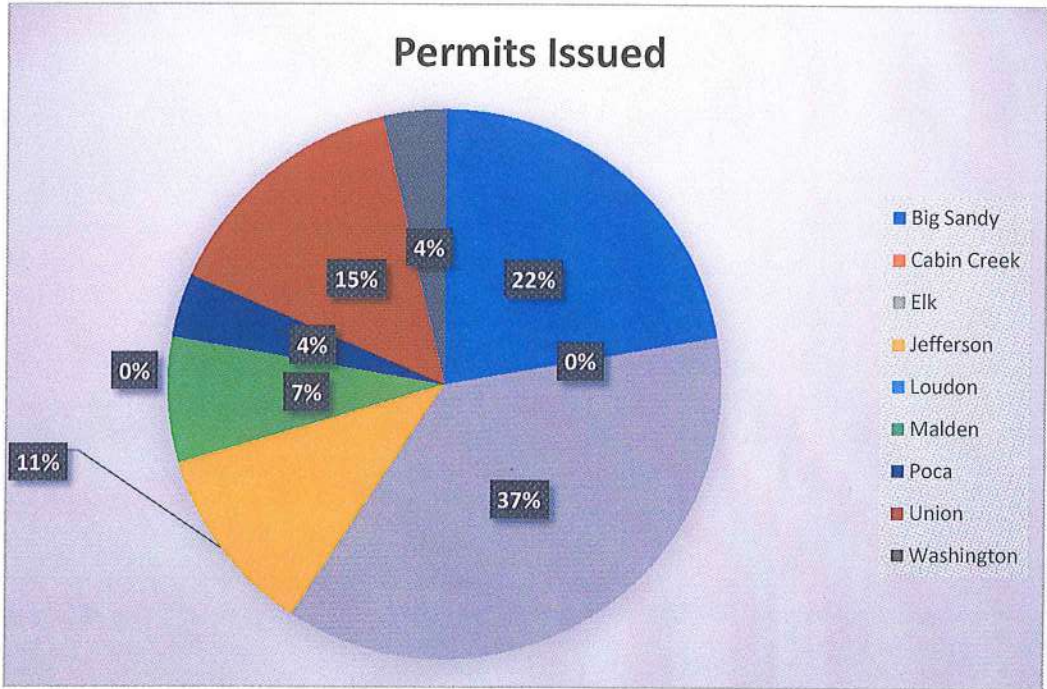
## October 2019

Permit Type	Number Issued
Cell Tower Maintenance	1
Cell Tower Co-Location	0
Garage / Detached Structure	2
Excavation/Fill	0



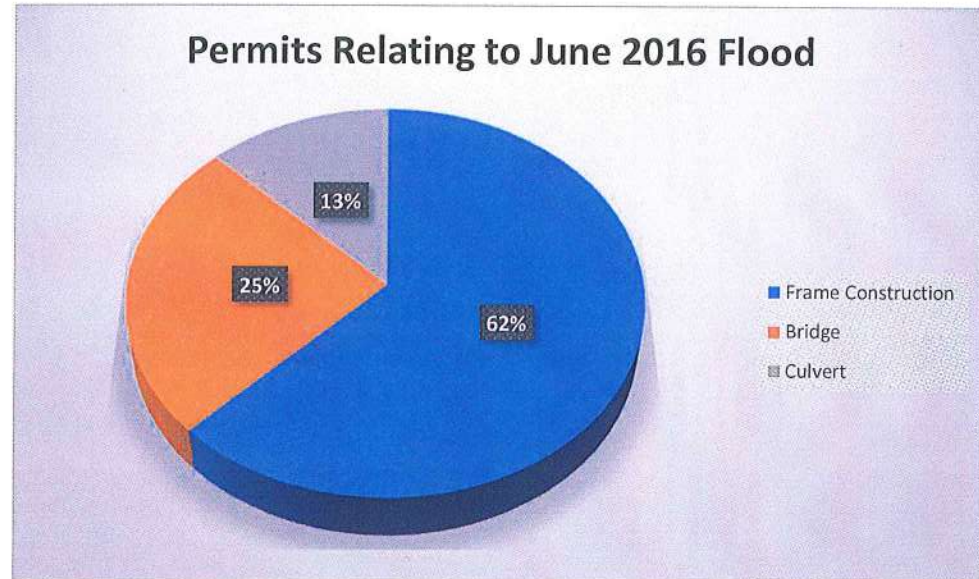
# October 2019

District	Permits Issued
Big Sandy	6
Cabin Creek	0
Elk	10
Jefferson	3
Loudon	0
Malden	2
Poca	1
Union	4
Washington	1
<b>Total Permits</b>	<b>27</b>



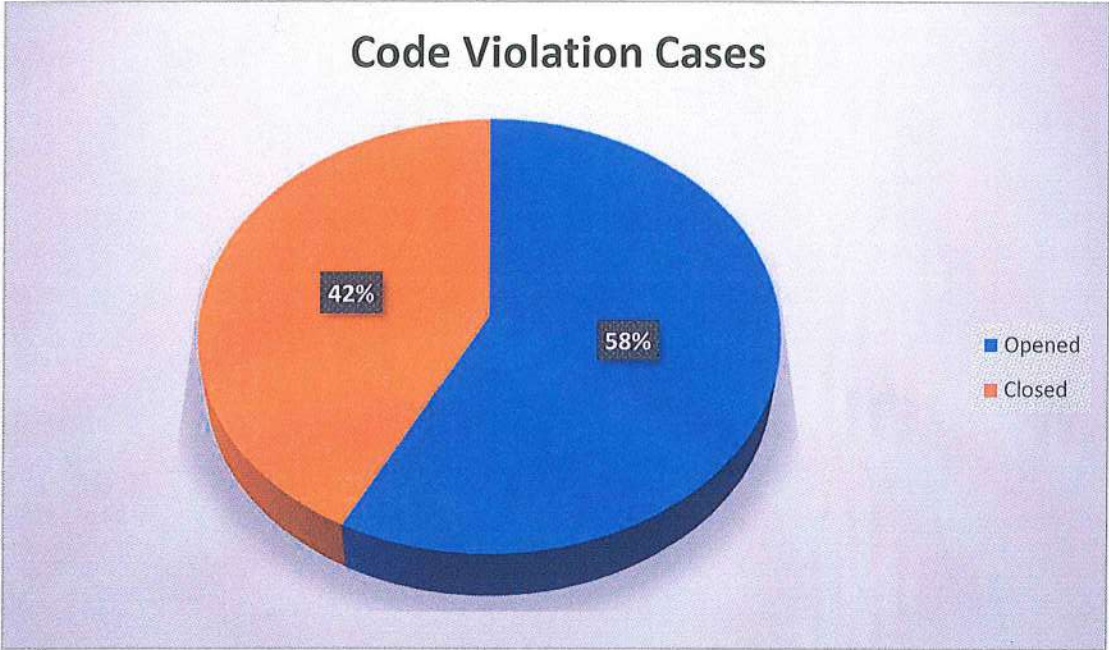
October  
2019

Permit Type	Number Issued
Frame Construction	5
Bridge	2
Culvert	1



# October 2019

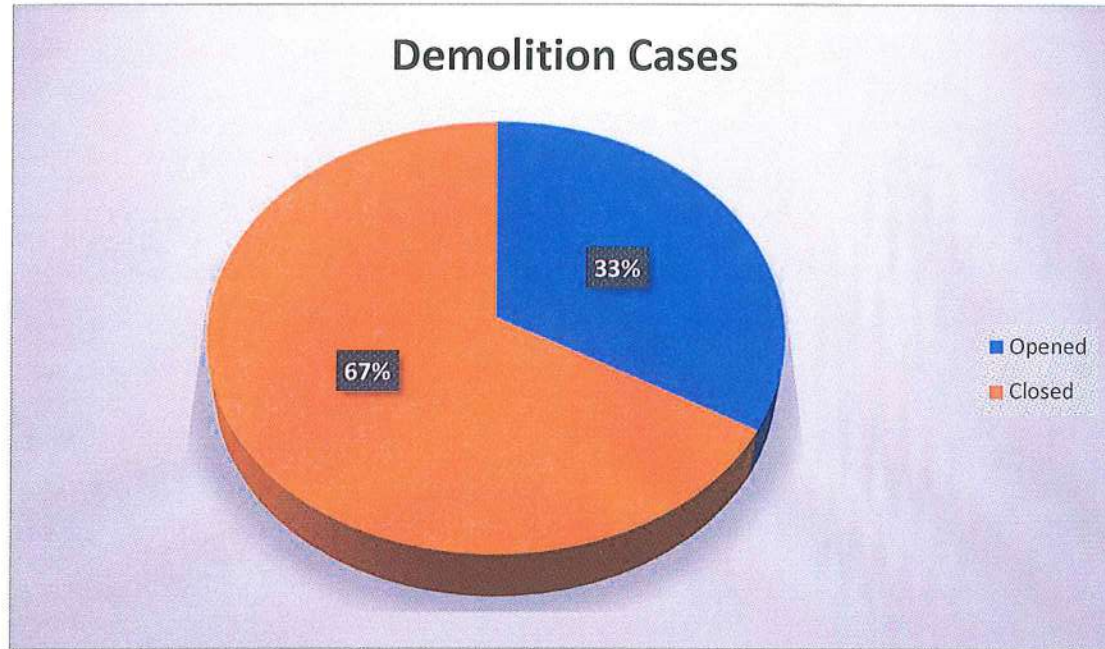
Code Violation	Cases
Opened	15
Closed	11





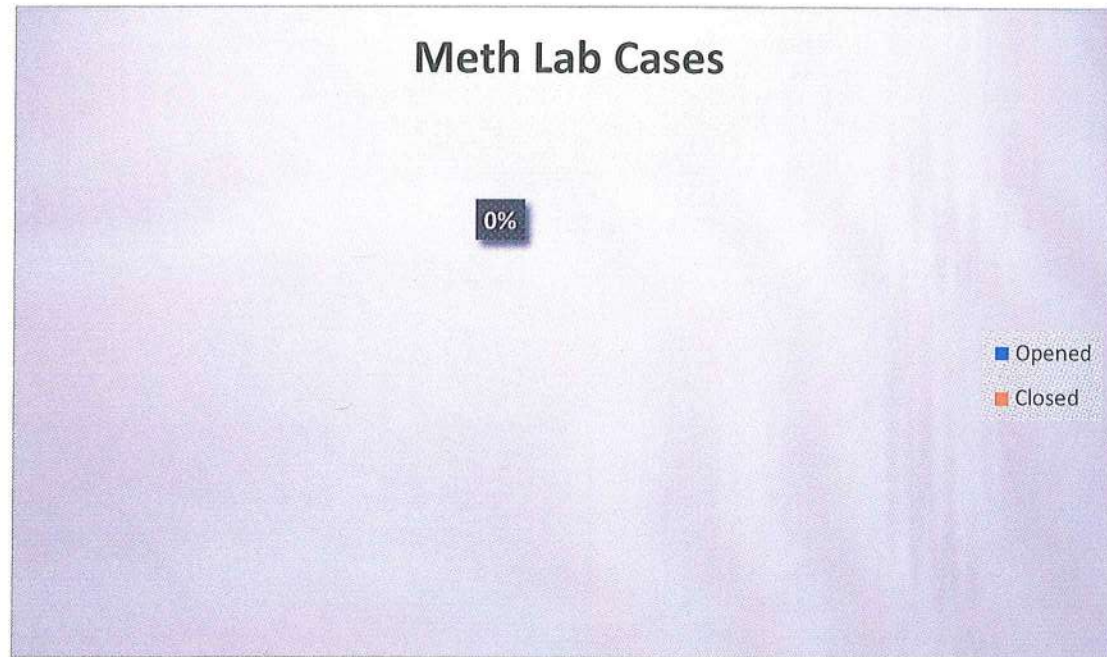
# October 2019

Demolition	Cases
Opened	1
Closed	2



# October 2019

Meth Labs	Cases
Opened	0
Closed	0



October  
2019

Category	Tons
Trash & Debris	128.32
Metal	14.34
E-Cycle	2.59
Vehicles	770
Tires	1208

